

Section IX The Annual Conference

- Paragraph 601
- The purpose of the annual conference is to make disciples of Jesus Christ for the transformation of the world by equipping its local churches for ministry and by providing a connection for ministry beyond the local church; all to the glory of God.

Annual Conference Structure Proposal

Our Mission

To **discover, equip, connect, and send** lay and clergy leaders who shape congregations that offer Jesus Christ to a hurting world, one neighborhood at a time.

our structure has to support this mission!

Structure Constituents

Local Churches

Laity

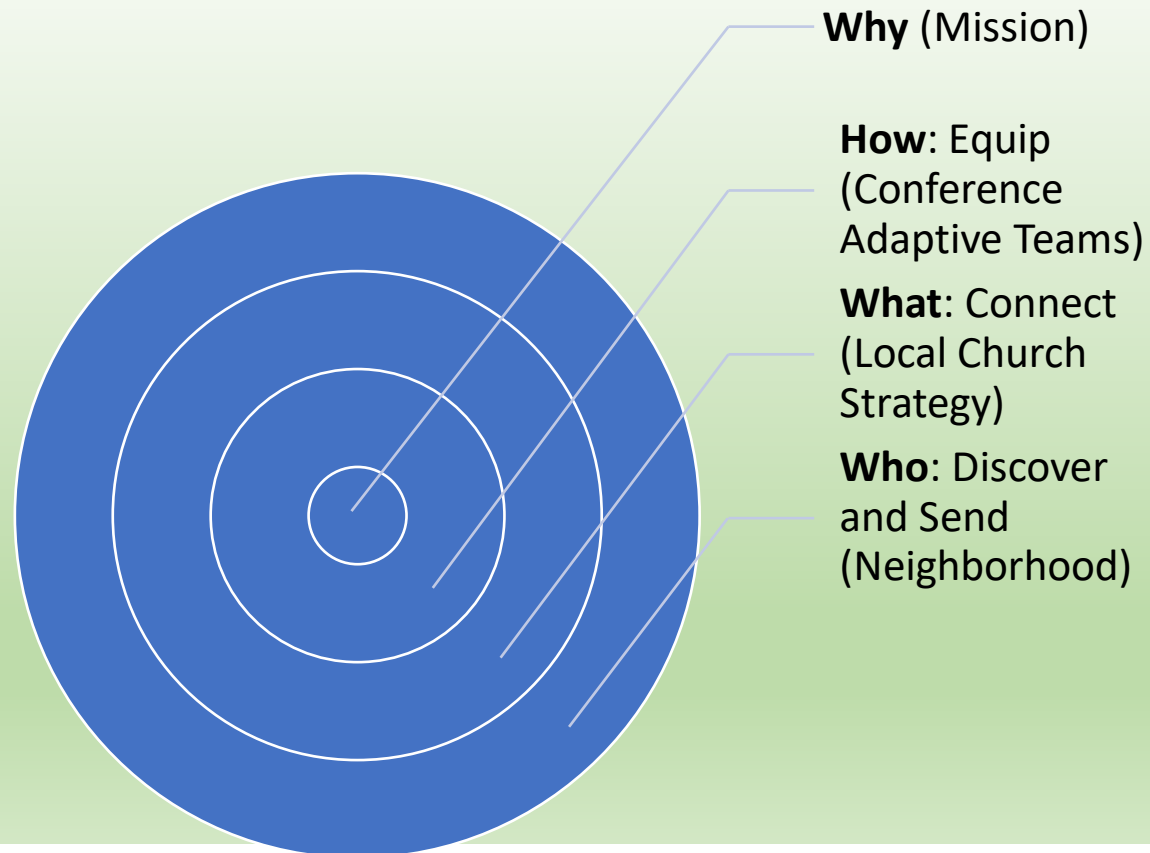
Clergy

Neighborhoods

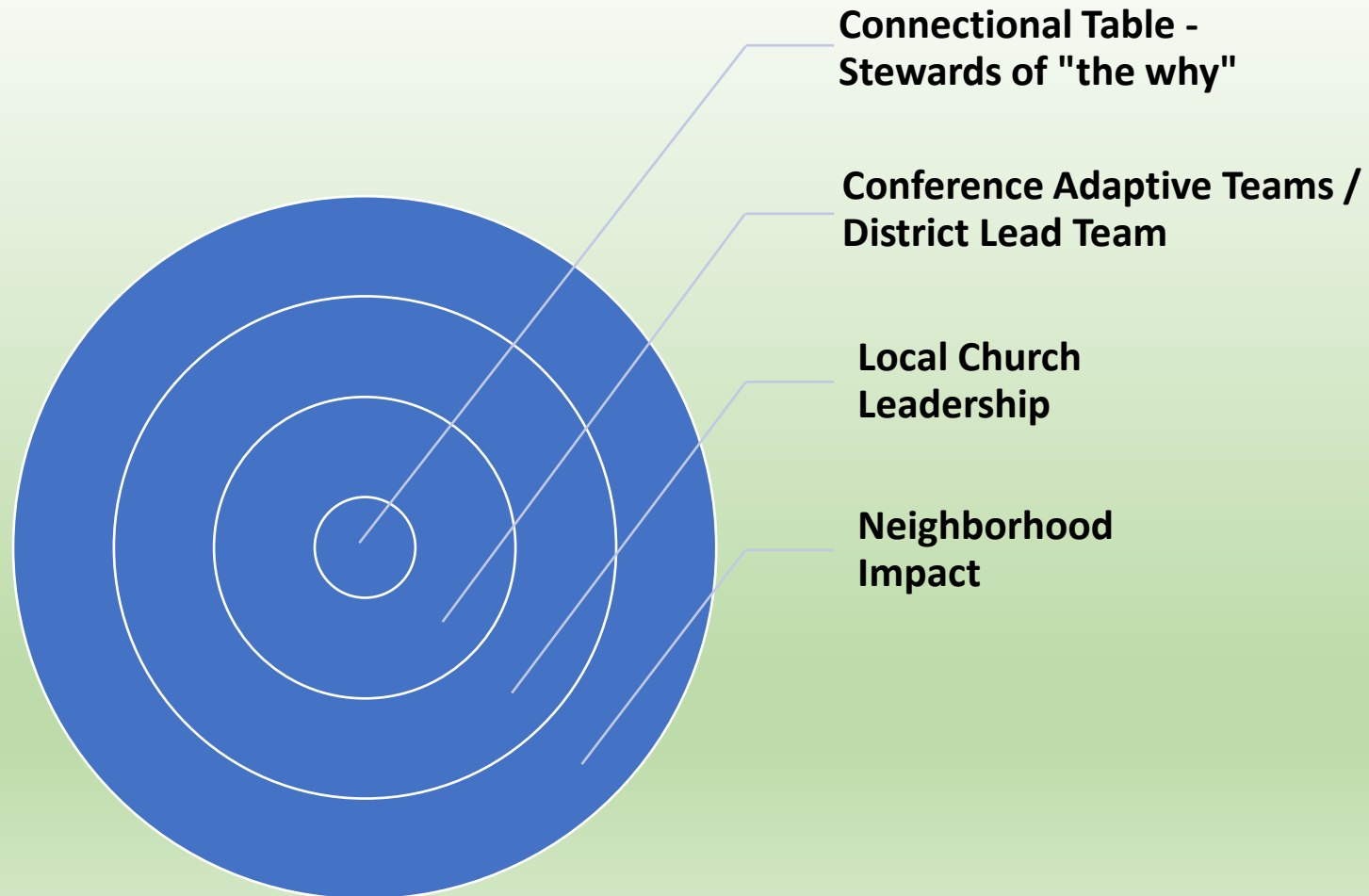
Our structure has to support these groups

"...equipping its local churches for ministry and by providing a connection for ministry beyond the local church..."

We need stewards of the mission at the center of our structure



We need stewards of the mission at the center of our structure



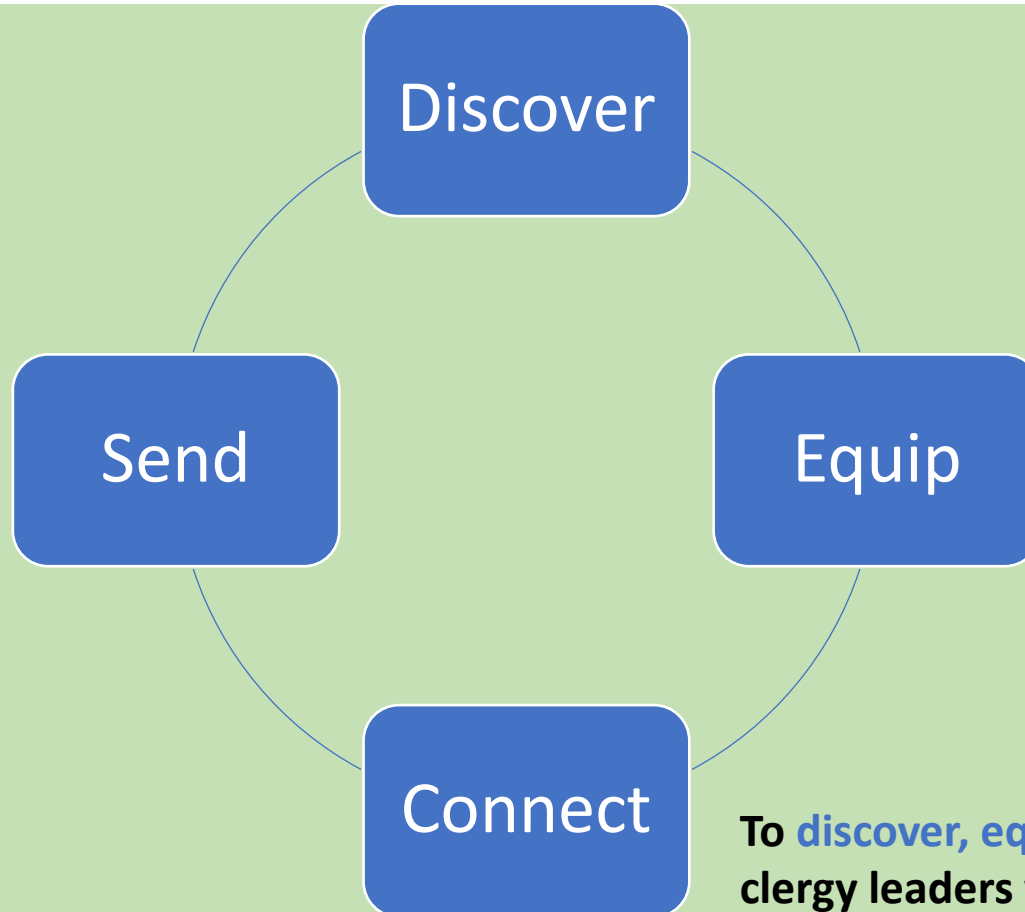
Connectional Table

- A team comprised of the bishop, conference team leaders, conference lay leaders, assistant to the bishop, Committee on Episcopacy and district superintendents in covenant with one another, following Jesus Christ in pursuit of a common mission; functioning as an adaptive team to develop strategies together to lead a **generative annual conference system for missional fruitfulness** while determining and stewarding strategic objectives through conference and district teams.

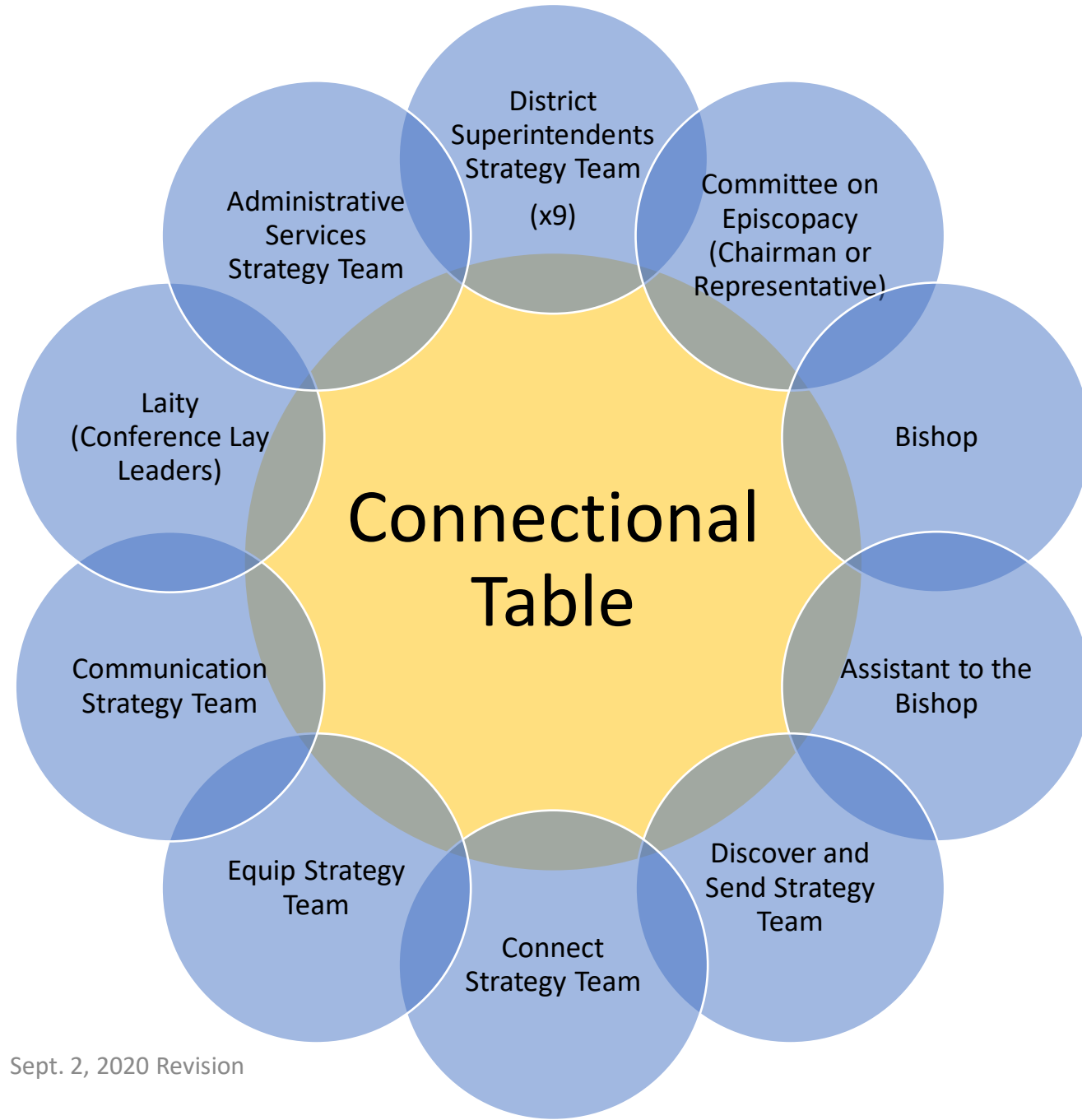
A Generative Annual Conference System for Missional Impact

**Conference
administration &
communication
provide support**

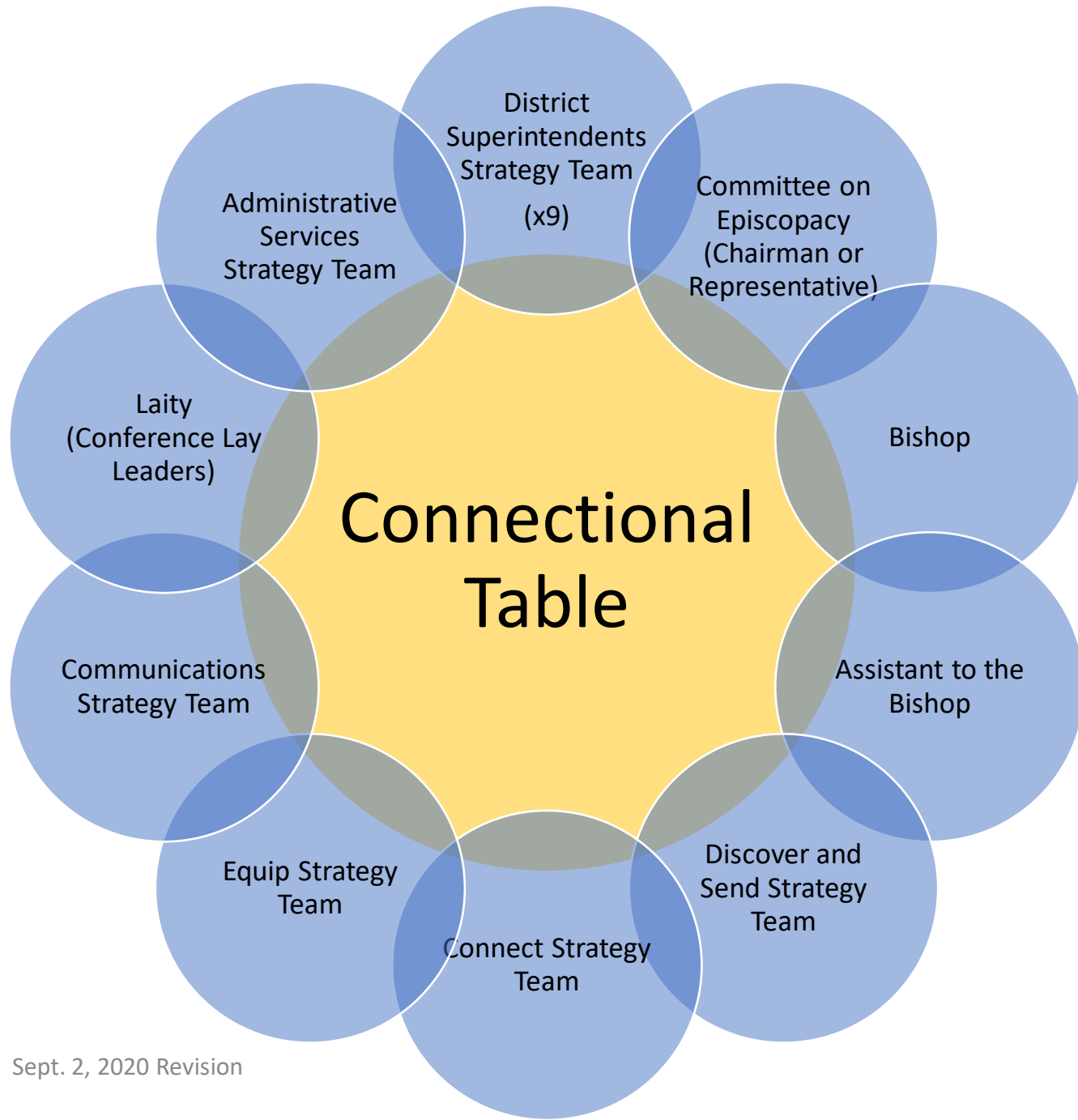
**Districts
implement strategy
in relationship with
this system**



To **discover, equip, connect, and send** lay and clergy leaders who shape congregations that offer Jesus Christ to a hurting world, one neighborhood at a time.



- Connectional Table**
- Bishop**
- Assistant to Bishop**
- District Superintendents**
- Discover and Send Strategy Team Leader**
- Equip Strategy Team Leader**
- Communications Strategy Team Leader**
- Connect Strategy Team Leader**
- Administrative Services Strategy Team Leader**
- Laity (Conference Lay Leaders)**
- Committee on Episcopacy (Chairman or Representative)**



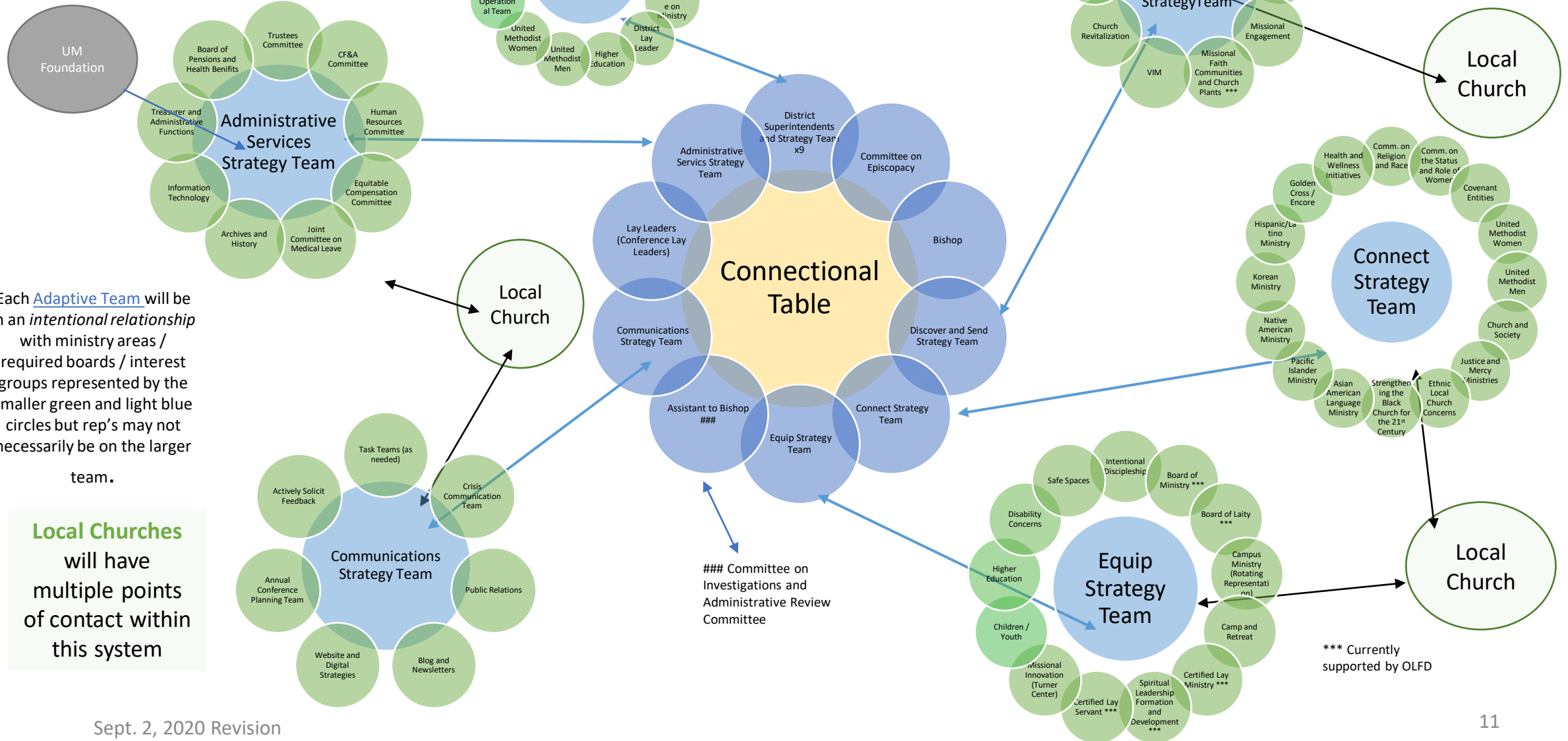
Each team leader would have an adaptive ministry team possibly made up of committee members related to their work + persons gifted to lead in that ministry. Each DS would have a leadership team.

Adaptive Ministry Team Definition

- A team of people in covenant with one another, following Jesus Christ in pursuit of a common mission; an adaptive team works together to address challenges that do not have a technical solution and in fact current knowledge is not sufficient, therefore the team develops solutions and strategies together.
- An attitude of collaboration, learning, and spiritual discernment is necessary. The Connectional Table and conference ministry teams are meant to be adaptive, not merely receiving reports but truly embracing innovation and risk-taking as well as holding one another accountable to pursuing spiritual formation as disciples of Jesus Christ.

AC Organization Graph

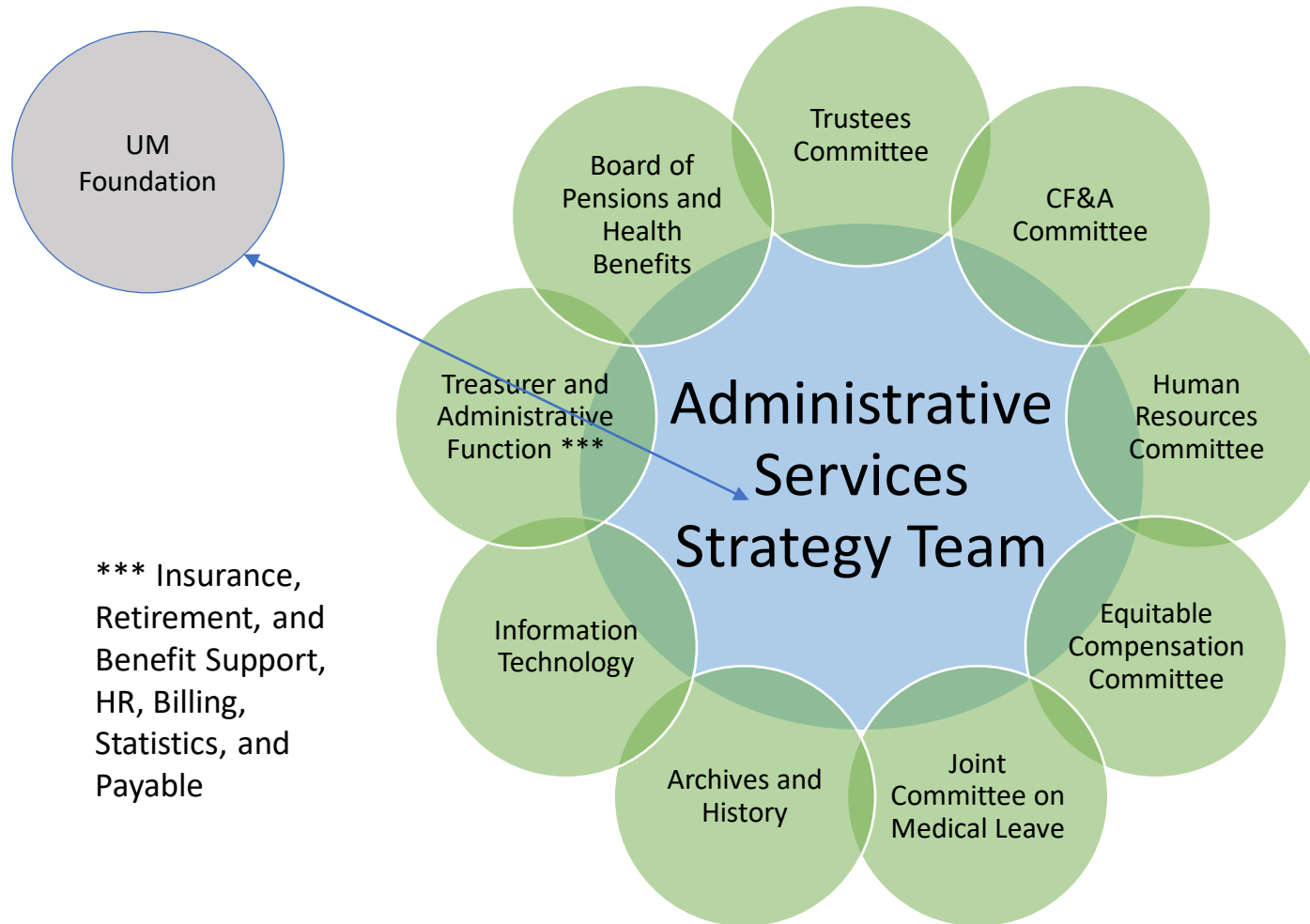
Adaptive Covenant Teams
Stewarded by a Connectional Table



Each Adaptive Team will be in an intentional relationship with ministry areas / required boards / interest groups represented by the smaller green and light blue circles but rep's may not necessarily be on the larger team.

Local Churches will have multiple points of contact within this system

Administrative Services Strategy Team

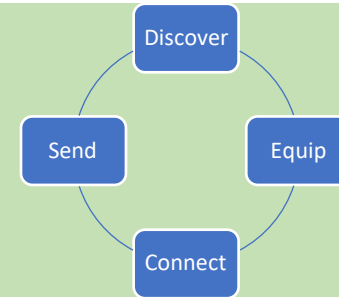


*** Insurance, Retirement, and Benefit Support, HR, Billing, Statistics, and Payable

Communication Strategy Team



Definition Discover and Send



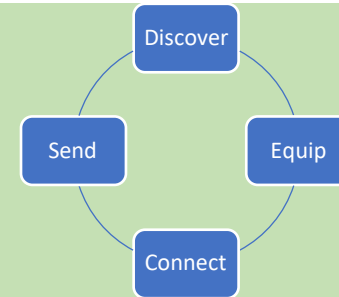
- *Discover: we discover leaders who offer Christ to a hurting world one neighborhood at a time in order to fulfill the Great Commandment through resourcing our ministry settings and local churches to partner with their community for evangelism and to form new places of a Methodist presence.*
- *Send: we send committed disciples of Jesus Christ to serve the world through diverse ministry settings and local congregations.*

Discover and Send Strategy Team



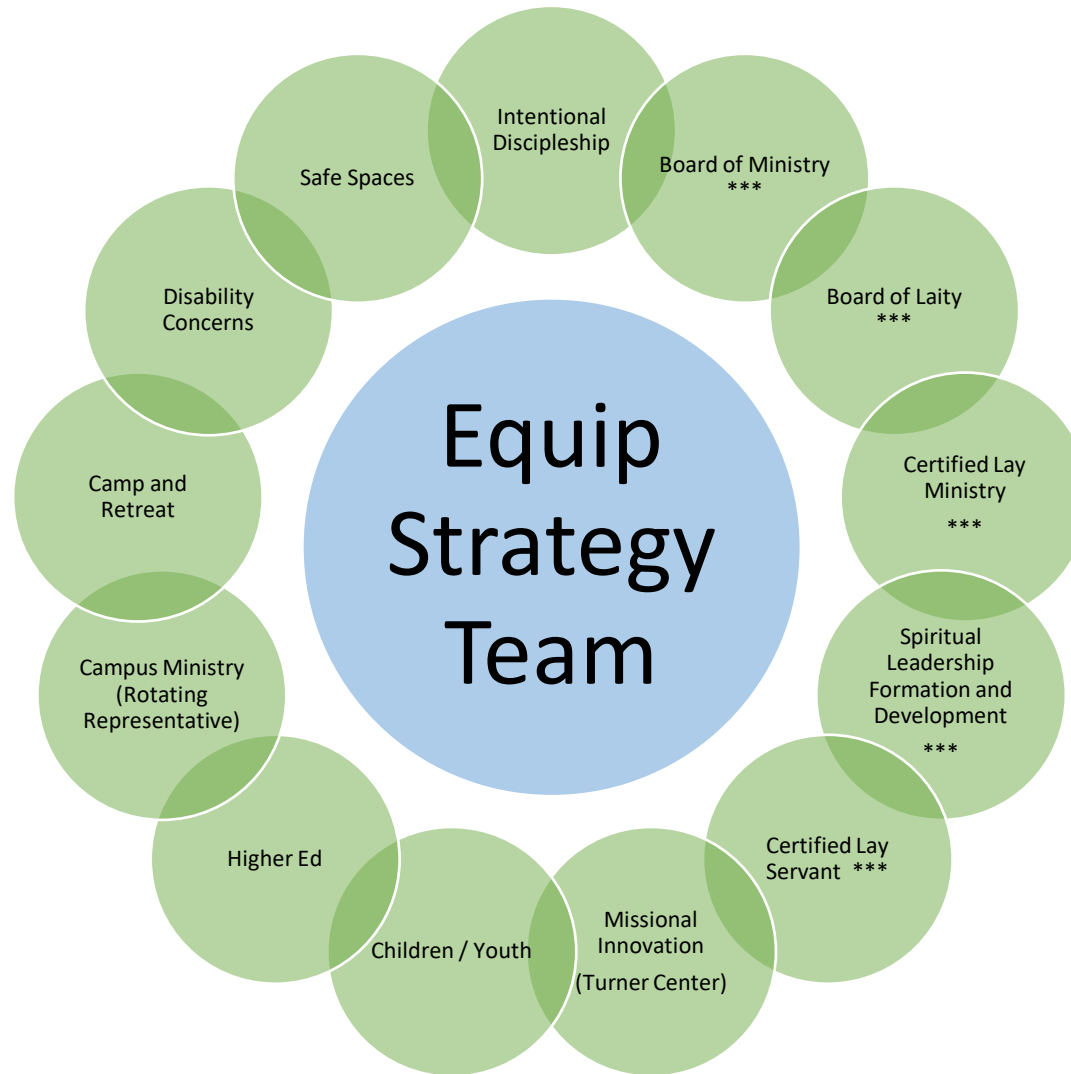
*** Currently Part of New Church Development

Definition of Equip



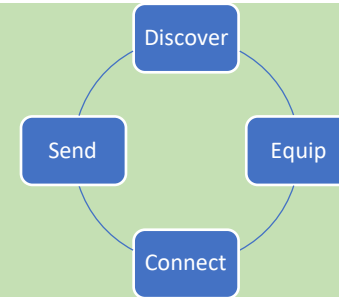
- *We equip lay and clergy leaders, in partnership with the local ministry setting, to effectively offer Christ to a hurting world one neighborhood at a time.*

Equip Strategy Team



*** Currently supported by OLFD

Definition of Connect

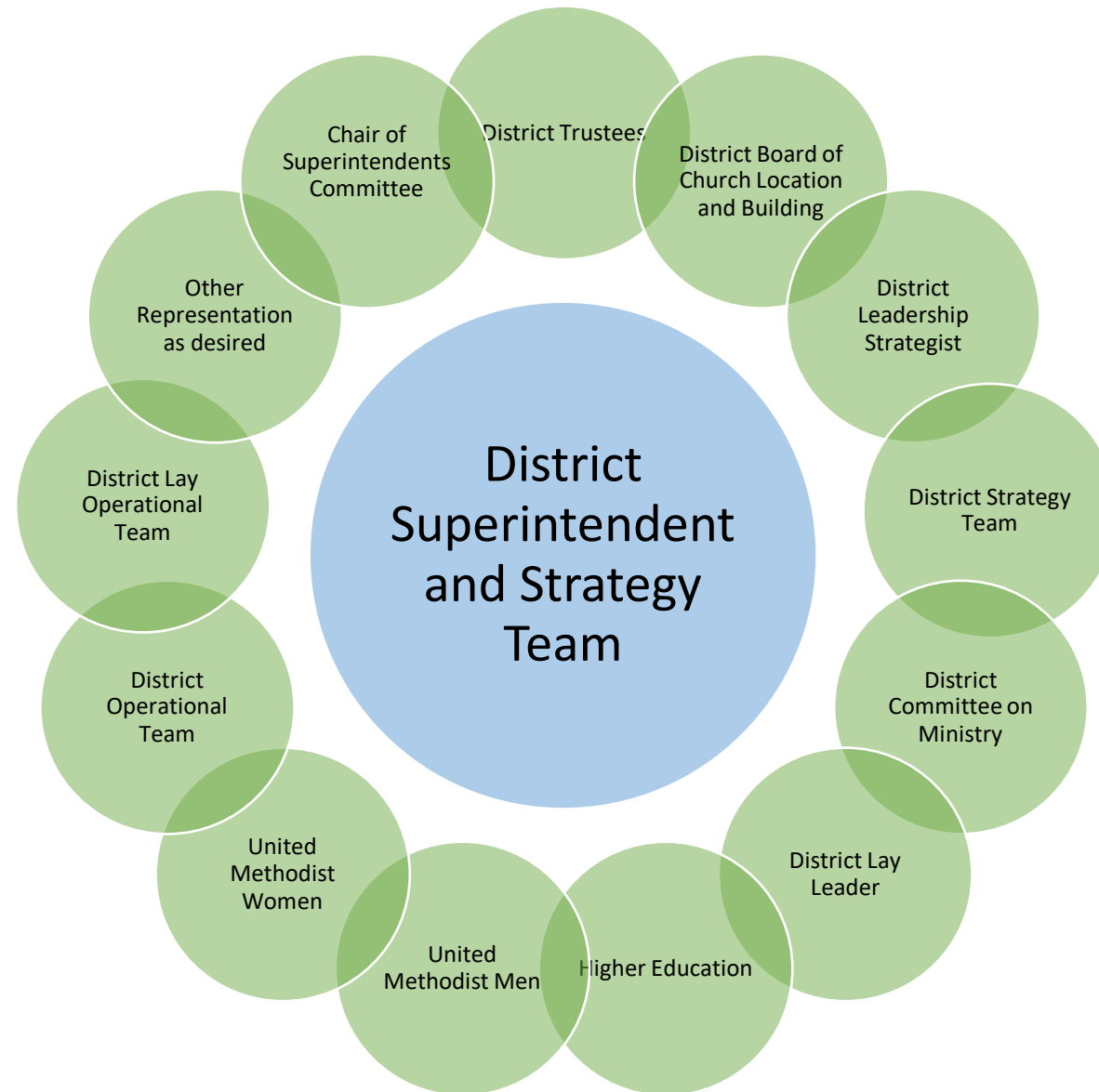


- *We connect ministries and disciples to missional expressions of their faith by providing resources to build a culture of collaboration and effectiveness.*

Connect Strategy Team



District Superintendent and Strategy Team (x9)



Assistant to the Bishop

